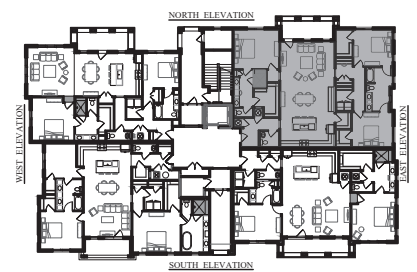


Floor Plan

Westhaven - 6037 Whitman Road - Unit 104 (Plan 4A)



"Key" Plan

HEATED SQUARE FOOTAGE: 1,962 S.F.
BALCONY SQUARE FOOTAGE: 142 S.F.

"Whitman Condominiums"



This elevation and floor plan are not to scale and are a graphic illustration for marketing and presentation only. All floor plans, renderings, elevations, text, design, and illustrative material in this publication are the property and copyright of Ford Classic Homes and cannot be reproduced in any way - electronically, mechanically, photometrically, recording or otherwise - without written permission of Ford Classic Homes. All rights reserved. All floor plans, renderings, elevations and pricing are approximate and subject to change with out notice. Some features indicated on plans may be optional and for illustrative purposes only. Ask your sales representative for pricing.

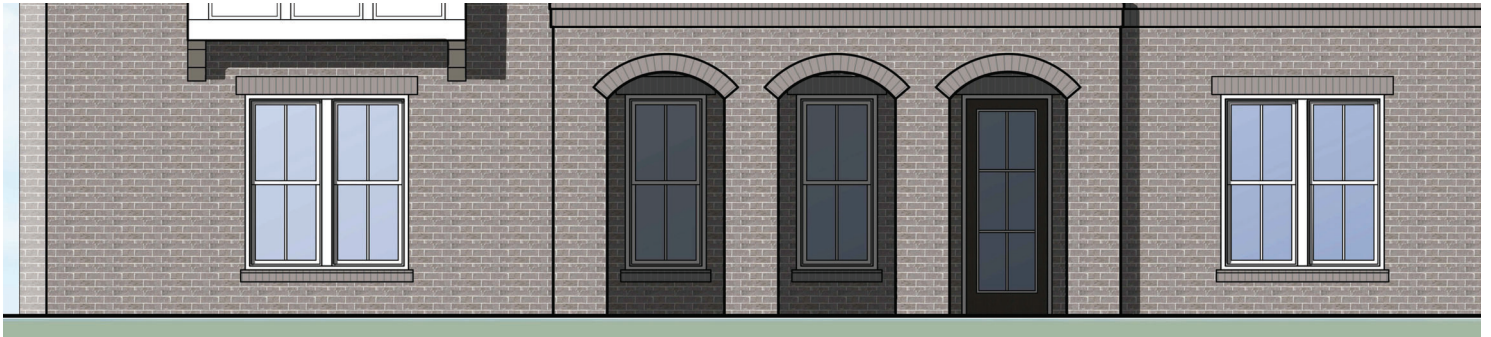




East Elevation



"Key" Plan



North Elevation

Westhaven - 6037 Whitman Road - Unit 104 (Plan 4A)



This elevation and floor plan are not to scale and are a graphic illustration for marketing and presentation only. All floor plans, renderings, elevations, text, design, and illustrative material in this publication are the property and copyright of Ford Classic Homes and cannot be reproduced in any way - electronically, mechanically, photometrically, recording or otherwise - without written permission of Ford Classic Homes. All rights reserved. All floor plans, renderings, elevations and pricing are approximate and subject to change with out notice. Some features indicated on plans may be optional and for illustrative purposes only. Ask your sales representative for pricing.

