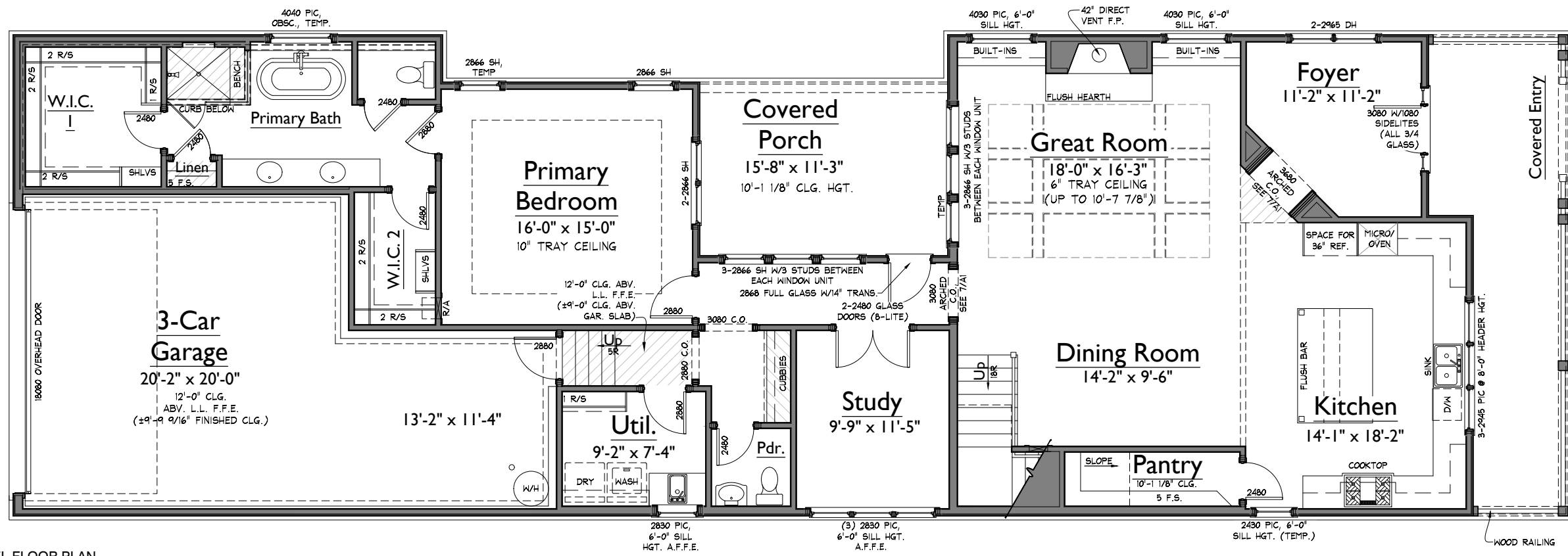


ISSUE DATE:	03 OCT 2025 - CTT
	05 NOV 2025 - CTT
	19 NOV 2025 - CTT
	13 APR 2026 - KJK

A1

LOWER LEVEL FLOOR PLAN

AREAS			
HEATED LIVING	BASEMENT	0	3311
	FIRST FLOOR	1932	
	SECOND FLOOR	1379	
	TOTAL HEATED LIVING	3311	
UNFIN. LIVING	UNFIN. BASEMENT	0	3311
	UNFIN. FIRST FLOOR	0	
	UNFIN. SECOND FLOOR	0	
	TOTAL UNFIN. LIVING	0	
MECH./STOR/OTHER	UNFIN. STORAGE	0	4303
	GARAGE	588	
	COVERED ENTRY	227	
	COVERED PORCHES	177	
	TOTAL OTHER	992	
B	LAST CHECKED: 11.18.2025 TROY		



1 LOWER LEVEL FLOOR PLAN
1/8" = 1'-0"

NOTE: ROOMS ON THIS PLAN ARE ANNOTATED WITH SIZES FOR DEPICTIVE PURPOSES ONLY AND MAY VARY DUE TO A NUMBER OF CONDITIONS. ROOM SIZES ARE MEASURED TO FRAMING WHERE WALLS ARE PRESENT. WHERE NO WALLS ARE PRESENT BETWEEN SPACES, ROOMS AS SIZED MAY OVERLAP SLIGHTLY OR NOT TOUCH.

SOUTHVALE LOT 055
SECTION 2 - 208 EQUINE STREET
AUTUMN 41'

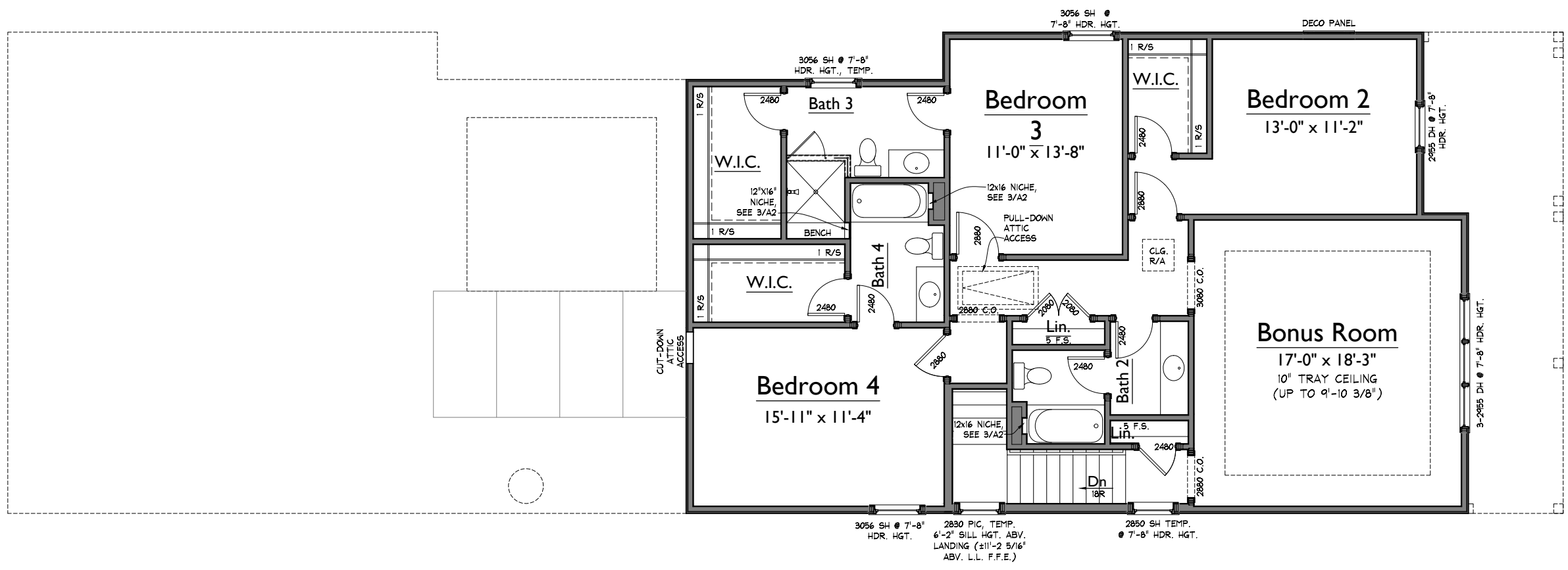
LAST CHECKED: 11.19.2025 TROY

SV055_autuSV41

ISSUE DATE:	03 OCT 2025 - CTT
	05 NOV 2025 - CTT
	19 NOV 2025 - CTT
1	13 APR 2026 - KJK

A2

UPPER LEVEL FLOOR PLAN



1 UPPER LEVEL FLOOR PLAN
1/8" = 1'-0"

S:\Projects\Southvale\055_autuSV41\FR02.dwg katie.king 04/13/26 - 3:30 P

NOTE: ROOMS ON THIS PLAN ARE ANNOTATED WITH SIZES FOR DEPICTIVE PURPOSES ONLY AND MAY VARY DUE TO A NUMBER OF CONDITIONS. ROOM SIZES ARE MEASURED TO FRAMING WHERE WALLS ARE PRESENT. WHERE NO WALLS ARE PRESENT BETWEEN SPACES, ROOMS AS SIZED MAY OVERLAP SLIGHTLY OR NOT TOUCH.



2 RIGHT ELEVATION
1/8" = 1'-0"



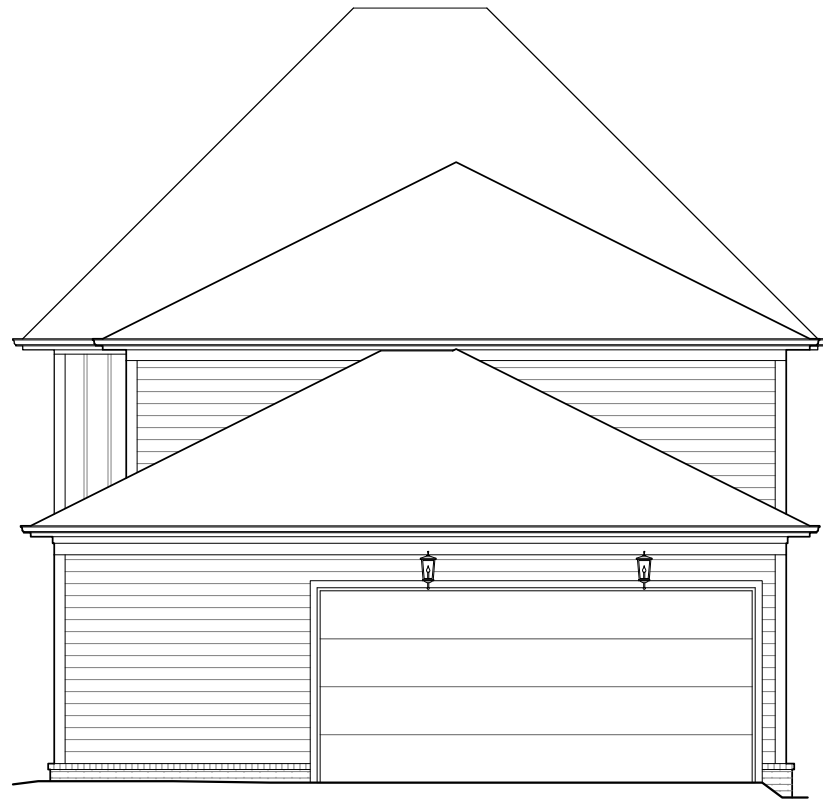
1 FRONT ELEVATION
1/8" = 1'-0"

SOUTHVALE LOT 055
SECTION 2 - 208 EQUINE STREET
AUTUMN 41'
ELEVATIONS
SV055_autuSV41

LAST CHECKED: 11.19.2025 TROY

ISSUE DATE:	
	03 OCT 2025 - CTT
	05 NOV 2025 - CTT
	19 NOV 2025 - CTT
1	13 APR 2026 - KJK

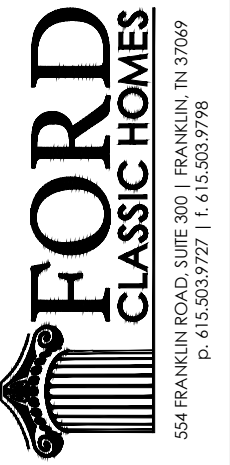
A4
ELEVATIONS



2 REAR ELEVATION
1/8" = 1'-0"



1 LEFT ELEVATION
1/8" = 1'-0"



554 FRANKLIN ROAD, SUITE 300 | FRANKLIN, TN 37069
p. 615.503.9727 | f. 615.503.9798

SOUTHVALE LOT 055
SECTION 2 - 208 EQUINE STREET
AUTUMN 41'
ELEVATIONS
SV055_autuSV41

LAST CHECKED: 11.19.2025 TROY

ISSUE DATE:	
	03 OCT 2025 - CTT
	05 NOV 2025 - CTT
	19 NOV 2025 - CTT
1	13 APR 2026 - KJK

A5
ELEVATIONS

04/13/26 3:30p
SV055 - REV.1